

**VOLK**<sup>®</sup>  
IMAGING



PICTOR<sup>+</sup> PLUS

# Making portable **possible.**



PICTOR **+** PLUS



The Pictor Plus portable retinal camera can take your practice places. From the exam room to on-location screenings, nursing home calls and everywhere in between. It is lightweight, weighing just 1 lb., and will shoot detailed high resolution images in daylight or darkness. The Pictor Plus portable imager moves with your practice and makes it possible to expand your services.

#### > Improved Patient Care

Pictor Plus can provide first class ophthalmic care. The high resolution imagery Pictor Plus produces is very effective during initial screenings and follow-up treatments. Patient information is entered directly into the handset for patient records.

#### > Simple Integration

Featuring Wi-Fi connectivity, Pictor Plus can seamlessly integrate with any PC or mobile device to upload jpg images to your patient database system. Pictor Plus is now compatible with multiple image analysis and EMR software solutions and has DICOM compatibility.

#### > Maximum Portability

Weighing a mere 1 lb., (0.45kg), Pictor Plus is easily portable and highly effective in mobile situations. A proven success in the rapidly expanding telemedicine applications, Pictor Plus is especially versatile to examine patients where access may be difficult.

#### > Pays For Itself

In as little as 4 months your practice can expect a return on the original investment of the Pictor Plus device. Thereafter, it contributes to your revenue stream.



### > Superior Versatility

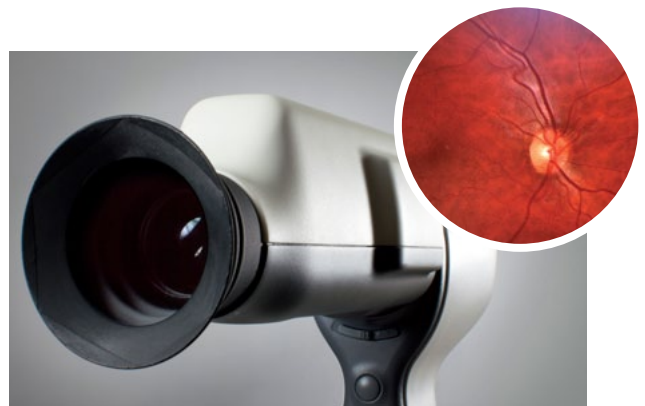
Two easily interchangeable modules provide high resolution retinal (non-mydratric) or external eye imaging. Two additional modules are available for otoscopic and dermoscopic examination.

**Retinal Module** - Pictor Plus retinal imaging enables non-mydratric fundus examination with a 40° field of view. With digital still and video images, the appearance of optic disc, macula and retinal vasculature can be screened and documented for ocular lesions and anomalies.

- 9 fixation targets to target a variety of retinal images
- Reflection free imaging with ten illumination levels
- Not necessary to dilate pupils (minimum pupil size 3mm)
- Produces color and red free images for contrast
- Automatic and manual focusing
- Diopter compensation -20D to + 20D
- Slit lamp mount adapts Pictor to any slit lamp

**Anterior Module** - Pictor Plus anterior imaging provides high-resolution digital image data of the surface of the eye and areas directly surrounding the eye. The cobalt blue LED light allows fluorescent imaging to detect a dry eye or any cuts or rashes on the surface of the eye.

- White and blue LED light for image targeting and capture
- Autofocus and optional manual adjustment
- 6x digital zoom
- Image resolution 2560 x 1920 pixels



# PICTOR<sup>+</sup> PLUS

## Technical Specifications

Camera Sensor Resolution	5 Mega Pixel
Optical Resolution	> 60 linear pixels/mm
Focus Range	Autofocus, -20 to +20D
Minimum Pupil Size	3mm
Image and Video Format	JPG, DICOM, MPEG-4/MPEG-1
Display	2.4" TFT-LCD
Memory	4GB SD card/2,000+ images
Power Supply	Rechargeable Ni-MH battery
Average Usage Time	3 hours continuous (2 batteries included)
Connectivity	Wi-Fi, USB
Type of Photography	Color, Red-Free, Infra Red
Dimensions	- Handset - 3.2" (w) x 6.5" (h) x 2.6" (d) (82 x 166 x 66mm) - Retina module - 2.6" (w) x 2.8" (h) x 6.3" (d) (67 x 73 x 160) - Anterior module - 3.1" (dia) x 2.7" (d) (79 x 70)
Weight	- Handset - 0.8 lb (400g) - Retina Module - 0.6 lb (300g) - Anterior module - 0.2 lb (92g)



Volk Optical Inc. | 7893 Enterprise Dr., Mentor, OH 44060 | P 440.942.6161 | E [volk@volk.com](mailto:volk@volk.com)

[www.volk.com](http://www.volk.com)