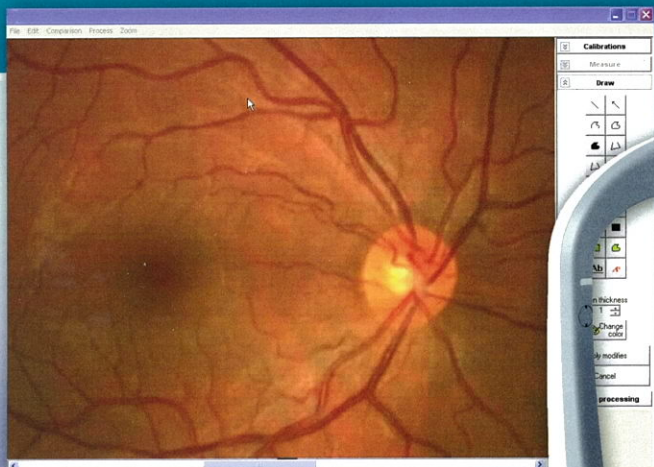


# ReSeeVit™ evolution

## The Total Solution



### Features

- Mouse Scroll and Hand Grab for Image Analysis
- Digital Cobalt, Cyan, and Red Free Filters
- Retinal Layer Filters
- Inversion Filter for Glaucoma Analysis
- Side by Side Image Comparison
- Image Overlay for Yearly Comparisons
- Digital Stereo 3D Views
- Advanced CD Ratio
- Annotation Tools
- Screening / HD Wellness Modes
- Panoramic Image Montage
- Screen Shot PDF Reports
- Full DICOM Modality for EHR Interface
- Windows XP Pro (32-bit), Windows 7 Pro (32-bit) compatible
- Windows Network Compatible

## ReSeeVit™ CR-2 Digital Imaging System

The Canon CR-2 Digital Retinal Camera epitomizes state-of-the-art non-mydriatic imaging technology with dramatically reduced brightness, improved overall comfort, and significantly shorter exams. For patients having non-mydriatic retinal exams, the bright flash can be unpleasant. CR-2 focuses on reducing patient stress to provide comfortable retinal exams by significantly reducing the flash intensity. Because retinal exams play an important role in screening for major illnesses, the ease of examining provided by the CR-2 supports overall healthcare for people.

**Canon**  
AUTHORIZED DEALER

136 W. Orion Street | Suite 3 | Tempe, Arizona | 85283  
TOLL FREE: 800.447.7511 | [www.voi2020.com](http://www.voi2020.com)



## Latest Imaging Technology

The **Canon CR-2** Digital Non-Mydriatic Retinal Camera incorporates the latest in Canon retinal imaging technology and enhancements in a compact and light design. It can easily be installed and takes up minimal office space and, for added convenience, can remain mobile for easy transportation when needed. The illuminated control panel on the **CR-2** allows medical staff to easily navigate operations in darkened rooms.

Contributing to a lower total-cost-of-ownership, the **CR-2** can help reduce energy costs in medical facilities with its energy efficient design.

## Compact and Lightweight

The small design of the **CR-2** provides the smallest footprint of any Canon retinal camera to date and is portable when needed.

## Low Flash Photography

The low flash intensity of the **CR-2** minimizes miosis, thus shortening the time required for taking multiple exams such as binocular and stereo images. The reduced brightness helps improve patient comfort and reduces the "ghost" image after exposure.

## Automatic Exposure Function

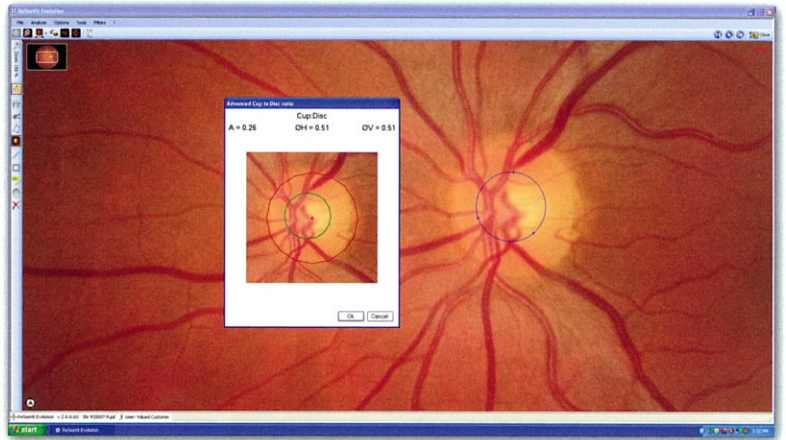
The observation light automatically optimizes the light brightness and flash intensity.

## Ergonomic Control Panel

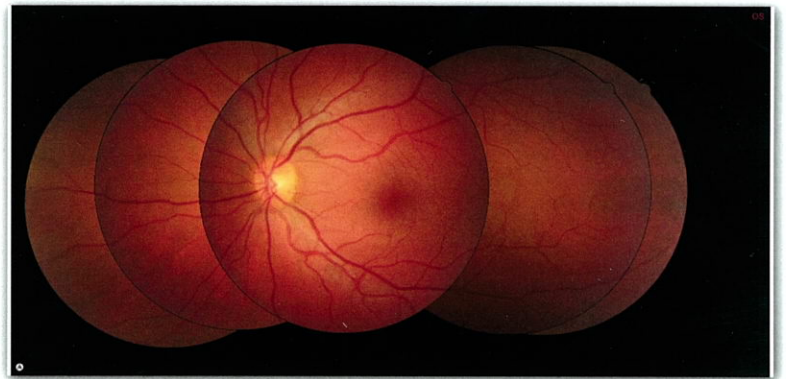
The simplified design of the control panel can be easily handled by a trained examiner. A one-hand joystick positions the camera for a desirable point of view. In darkly lit rooms, the operation panel illuminates for easier navigation. The 35 mm working distance between the patient and the operator allows easy access to the patient's eyes should they need assistance with opening their eyes.



136 W. Orion Street | Suite 3 | Tempe, Arizona | 85283  
TOLL FREE: 800.447.7511 | [www.voi2020.com](http://www.voi2020.com)



ReSeeVit™ has powerful annotation capabilities. This image shows the Cup-to-Disk ratio tool. It is also possible to define and measure an area, which is very valuable to track any changes from one visit to the next.



ReSeeVit's™ Panoramic view allow the layout of multiple images to show a large view of the retina which can then be saved with the PDF report function and saved into the patient's database file, printer, or exported to EHR.



Images can be separated into their RGB color components for viewing the various layers of the retina.